

OVERDOSE TRACKING AND RESPONSE FOR HARM REDUCTION PROGRAMS

Blue Valentine, Benton County

Peter Banwarth, Benton County

Cedar Derischebourg, Lincoln County

OVERDOSE TRACKING

- Today we will focus on nonfatal overdoses reversed and reported to harm reduction programs by people who use drugs, and their friends and family members.
- These nonfatal overdoses include those where EMS / 911 was not called.
- Many of these reversals would not otherwise be counted.



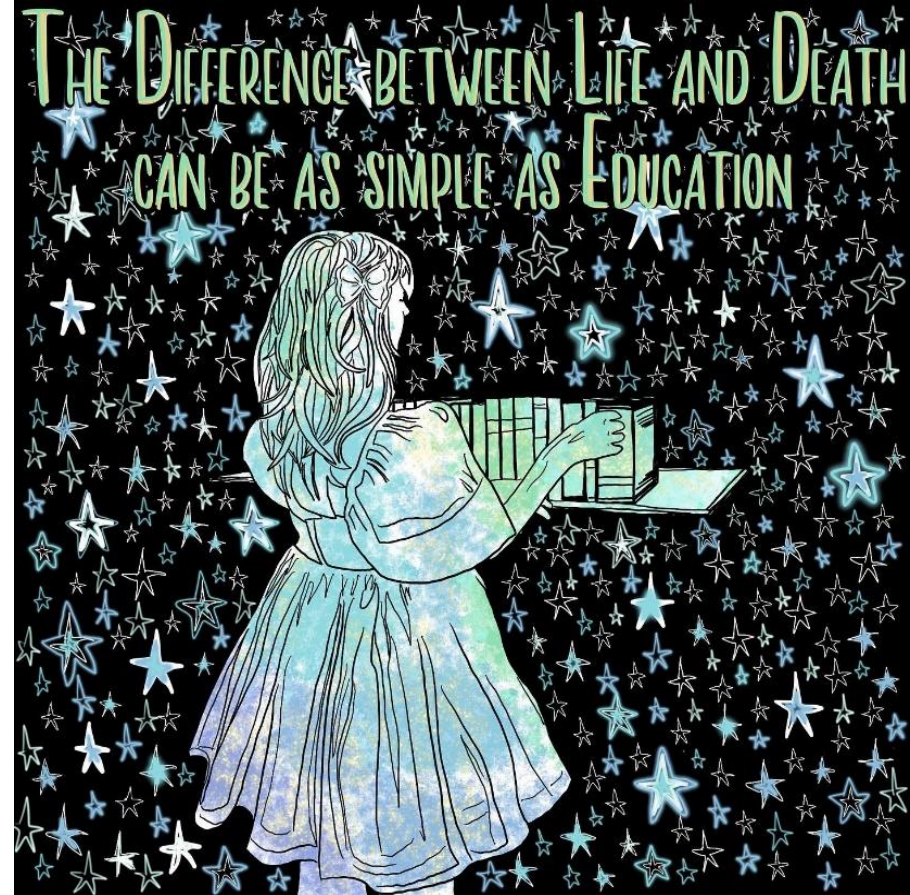
OVERDOSE TRACKING



- As we begin to saturate the community with naloxone, hospitals and first responders may see a decline in overdoses- but this does not mean that there is an actual decline in overdoses in the community.
- Our local harm reduction programs have been identifying local overdose increases, including spikes in overdoses, through community-level reversal reports.

OVERDOSE TRACKING

- We take confidential overdose reversal reports from our clients that do not identify the people who overdosed.
- Overdose reversal reports are optional, and not required to access more naloxone / narcan from our programs.



BOTH LINCOLN AND BENTON COUNTY HAVE IDENTIFIED SPIKES IN OVERDOSE REPORTS IN 2022

Lincoln County

- Emergency Notification sent out 1/24/22
- Lincoln County averages 1 overdose reversal report per month.
- 10 overdose reversals (without EMS being called / notified) reported in one month to harm reduction program.
- 5 additional overdoses were captured by hospitals in this time period.
- linked to blue M 30 pressed pills called “blues” or “dirty 30’s”



BOTH LINCOLN AND BENTON COUNTY HAVE IDENTIFIED SPIKES IN OVERDOSE REPORTS IN 2022

Benton County

- Health Alert sent out 3/1/22
- Between February 26-27, there were 7 overdose reversals (without EMS being called / notified) reported to harm reduction program.
- There was 1 fatal overdose also reported to the harm reduction program for that time period.
- Linked to blue M 30 pressed pills called “blues” or “dirty 30's”



OVERDOSE ALERT & SAFER USE FLYER

Tips for Safer Using



Don't use alone. If you don't have anyone that can sit with you, you can call Never Use Alone at 1-800-484-3731. They will take down your location and information and can call for help if you stop responding.



Don't use behind a locked door, because people can't get to you if you need help.



Don't use at the same time as anyone else. Take turns so you can look after each other and respond to overdose, if needed.



Have naloxone out and ready to go. Often, people panic when someone overdoses, and they aren't able to think clearly; make it as easy as possible for people to access naloxone in case they need to use it.



Go slow. Do a small "tester." Assume there is fentanyl in your supply. You can always use more, but you can't use less.



Do NOT swallow all or part of a pill. These are not from pharmacies and even part of one pill can lead to a fatal overdose.



Pills can be crushed and mixed with water using a sterile syringe to better control using a small amount at once.



If you are injecting or taking drugs orally, mix up as much as possible at once with water. This way, the fentanyl will be evenly distributed and everything that was mixed together will be the same strength. This will make it easier to calculate your next few doses.



Smoking or snorting pills or powders can reduce risk of overdose, but it is still possible- so go slow no matter how you are using.



Benton County Harm Reduction Program

Email: harm.reduction@co.benton.or.us

Call/Text: Chris at 541-740-0405, or Blue at 541-243-4394

Fentanyl Overdose Warning



M30 pills also called "dirty 30s" or "blues"

Fentanyl has been connected to recent overdoses and deaths in the area.

The most common reports were linked to pressed pills sold as "oxycodone" that are blue, marked with an M and the number 30.



Fentanyl may be in your drugs, including:

- Cocaine
- Heroin
- Methamphetamines
- MDMA (Ecstasy)
- Oxycodone
- Xanax
- Adderall
- Other pressed pills

Fentanyl cannot be evenly distributed when it is dry or powdered. This can result in "hotspots" that sit in drugs the same way chocolate chips sit in cookies. This means the same amount of drugs from the same batch can vary in strength.



Fentanyl tests are a useful resource, but a negative fentanyl test does not always mean a drug is free of fentanyl. If you use, assume there is fentanyl in your supply, even if the test is negative. See Tips for Safer Using on the back of this flyer.



Benton County Harm Reduction Program

offers naloxone, sterile syringes, fentanyl test strips, and other supplies for safer use.



Email: harm.reduction@co.benton.or.us

Call/Text: Chris at 541-740-0405, or Blue at 541-243-4394

OVERDOSE REVERSALS: KEY DATA POINTS

- Date of overdose
- Number of doses of naloxone used
- Drug used (what was the drug the person thought they were using when they overdosed)
- Geographic information (county, city, zip code)
- Was 911 called
- Was the person okay



MICROSOFT POWER BI

What is Microsoft Power BI used for?

Microsoft Power BI is used **to find insights within an organization's data**. Power BI can help connect disparate data sets, transform and clean the data into a data model and create charts or graphs to provide visuals of the data. All of this can be shared with other Power BI users within the organization.



BENTON COUNTY OVERDOSE REVERSAL DATA

Reversal reports from January 1, 2021 – March 22, 2022

Naloxone Database data - Overdose reversals

Number of overdose reversals

150

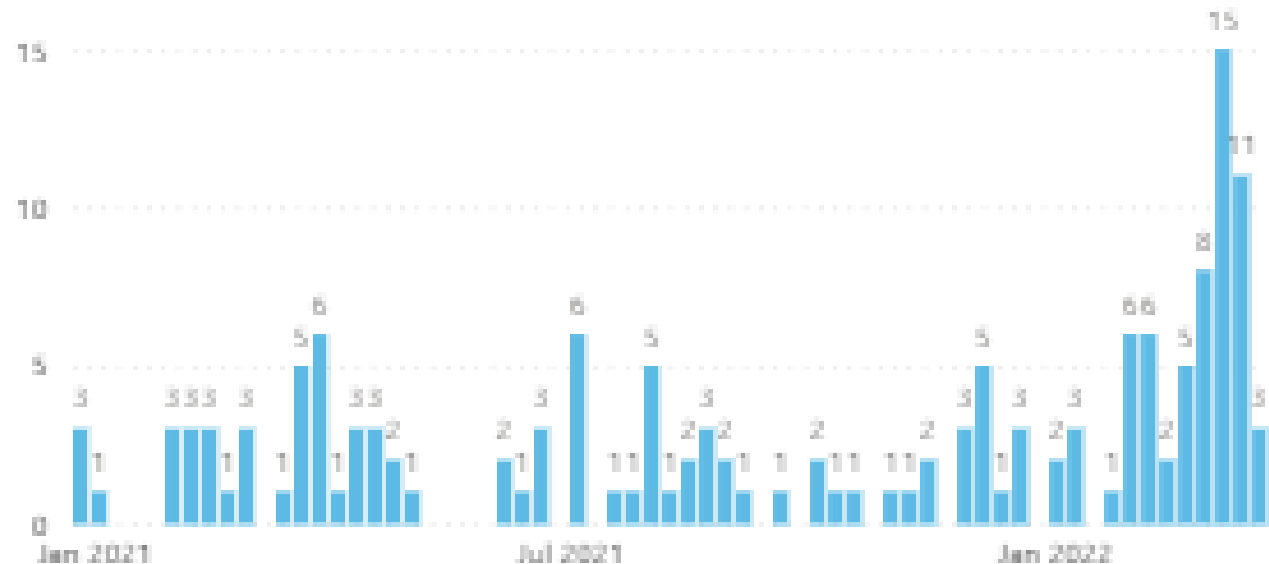
Slicers

Select a date range for overdoses

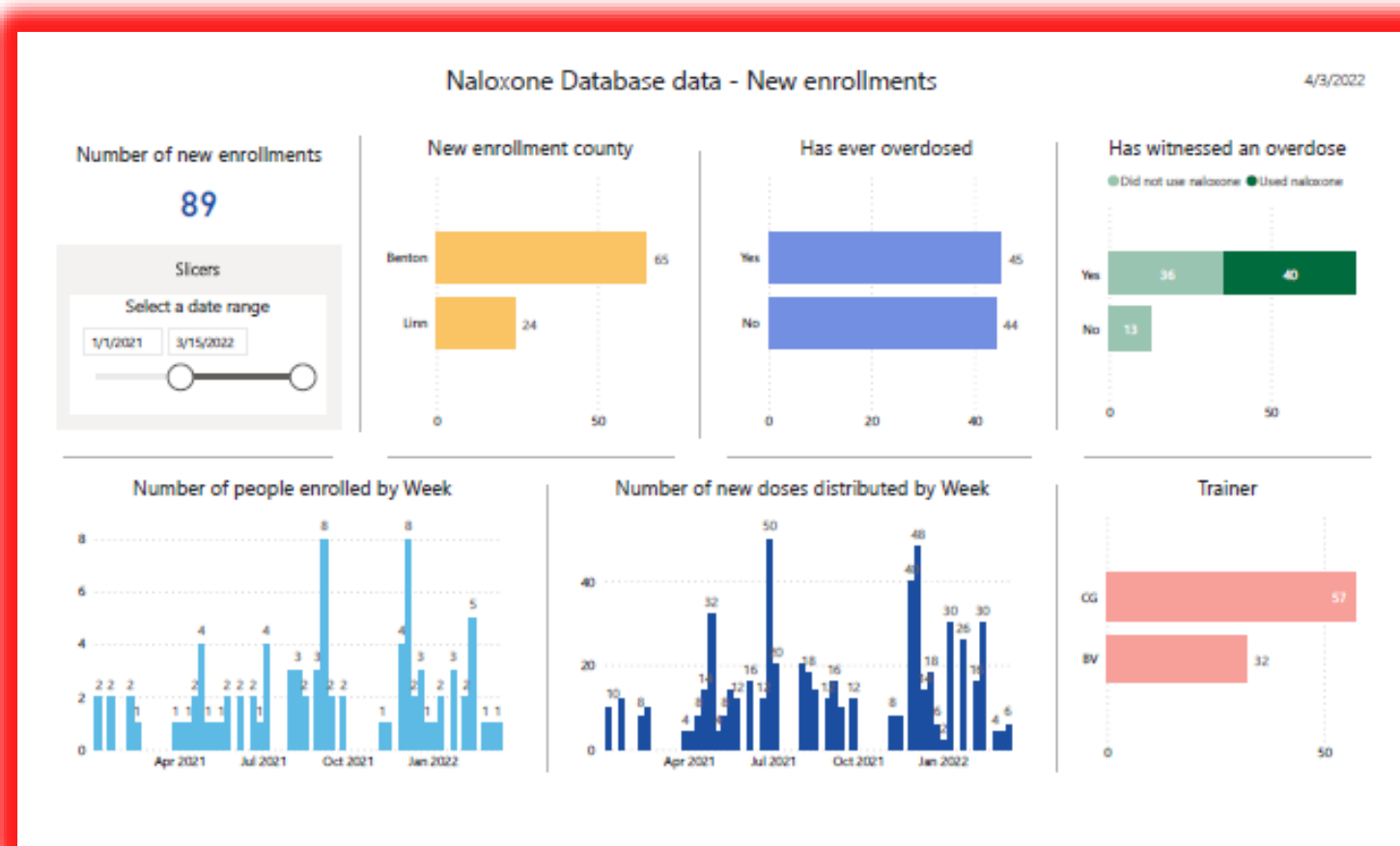
1/1/2021

3/22/2022

Number of overdose reversals by week of overdose

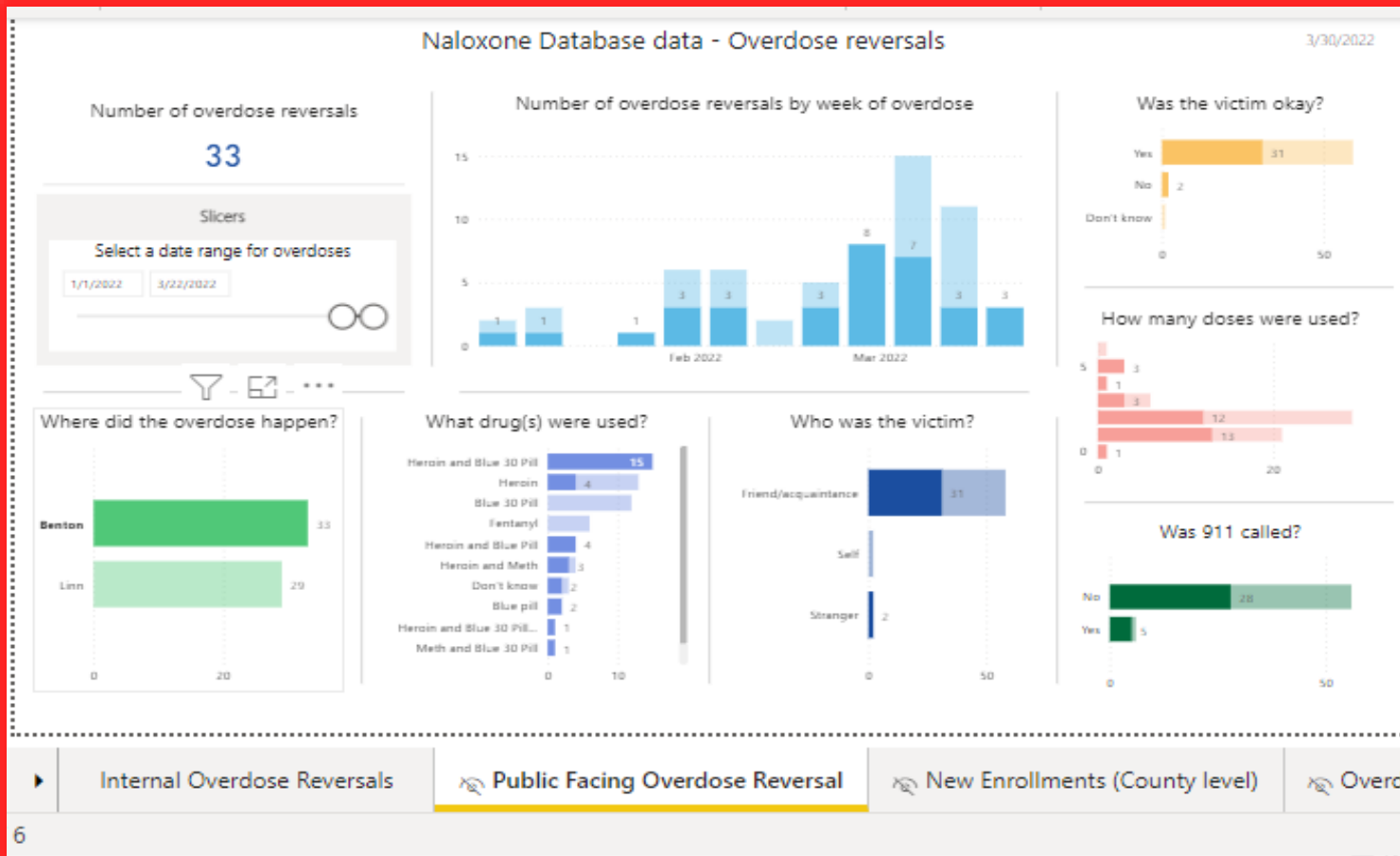


BENTON COUNTY NALOXONE ENROLLMENT



- This is an easy way to create visuals for the data you have collected.
- History of overdose is captured
- History of overdose response and naloxone use
- You can also add visuals for the total number of doses distributed or for any other data captured when people are enrolled.

BENTON COUNTY 2022 OVERDOSE REVERSAL DATA



- Overdoses can be sorted by county, city, or zip code.
- You can create separate visuals- one for the public and one for internal use with location specific data.
- This can help you decide the people / substance users / areas to target when there is a spike in overdoses.

QUESTIONS?

Blue Valentine, CHW, Benton County Health Department
Blue.valentine@co.Benton.or.us

Cedar Derischebourg, CHW, Lincoln County Public Health
cderischebourg@co.lincoln.or.us

Peter Banwarth, Epidemiologist, Benton County Health Department
Peter.Banwarth@Co.Benton.OR.US

Illustrations by Jamie Harary
@CelestialHeartbreak on instagram

